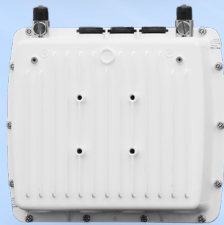


# Multipoint 10100(L) Series



## Product Snapshot

The Multipoint 10100 (L) product family offers an extensive range of models to meet the need of designers with specific requirements.

The range includes several base station and subscriber units, including combination subscriber/Wifi models.

Capable of throughput up to 672Mbps, AES 128 encryption, and delivering flexible antenna options, the 10100 Series is an excellent tool kit for the network designer.

- Wide Band 4.9 + 5 GHz Radio
- 2x2 MIMO radio delivering up to 672 Mbps
- Advanced QoS for quad-play applications
- AES 128 encryption and Radius authentication
- BSU redundancy (500 milliseconds switchover time)
- 20, 40, and 80 MHz channels.

## Powered by WORP<sup>®</sup>

Proxim WORP enables the most efficient wireless broadband access possible in a packet-based network. Advanced QoS controls, committed interface rates, latency controls, IGMP snooping, and native multicast support allow granular service level management and the best video performance available in this product class.

## Advanced Interference Management

Proxim ClearConnect<sup>™</sup> combines multiple dynamic technologies and delivers the best interference management solution available.

## Mobility

Featuring advanced Mobility technology the 10100 Series delivers rapid hand-off between fixed base stations and moving vehicles to ensure uninterrupted broadband at speeds up to 295 km/h (185 mph).

## Rugged Reliability

IP67 rated metal enclosure to ensure years of reliable service in harsh environments, including high winds, high salt, and temperature extremes.

## Specifications

### PRODUCT MODELS

MP-10150-SUL-US	Tsunami® MP 10150 Subscriber Unit Long-range, 866 Mbps, MIMO 2x2, 28 dBi panel antenna	PN: 901-00234
MP-10100L-BSU-US	Tsunami® MP 10100 Base Station Lite, 400 Mbps, MIMO 2x2, Type-N Connectors	PN: 901-00272
MP-10150L-BS9-US	Tsunami® MP 10150 Base Station Lite, 400 Mbps, MIMO 2x2, 90° sector antenna	PN: 901-00274
MP-10150L-BS1-US	Tsunami® MP 10150 Base Station Lite, 400 Mbps, MIMO 2x2, 22 dBi panel antenna	PN: 901-00275
MP-10100L-SUA-US	Tsunami® MP 10100 Subscriber Unit Lite, 400 Mbps, MIMO 2x2, Type-N Connectors	PN: 901-00273
MP-10150L-SUR-US	Tsunami® MP 10150 Subscriber Unit Lite, 400 Mbps, MIMO 2x2, 22 dBi panel antenna	PN: 901-00276
MP-10100L-BSx-866-UPG	Tsunami® MP 10100 Base Station Lite, 400 Mbps to 866 Mbps license upgrade	PN: 997-00032
MP-10100L-SUx-866-UPG	Tsunami® MP 10100 Subscriber Unit Lite, 400 Mbps to 866 Mbps license upgrade	PN: 997-00033

### INTERFACES

WIRED ETHERNET	Two auto MDI-X RJ45 10/100/1000Mbps Ethernet (Port #1 with PoE in & Data, Port #2 with PoE out & Data)
WIRELESS PROTOCOL	WORP® (Wireless Outdoor Router Protocol)

### RADIO & TX SPECS

MIMO	2x2:2
MODULATION	OFDM with BPSK, QPSK, QAM16, QAM64, QAM256
FREQUENCY	4.900 – 5.925 GHz (Subject to Country Regulations)
CHANNEL SIZE	40 MHz and 20 MHz (±5ppm channel accuracy)
DATA RATE	MCS 0 to 9 with Dynamic Data Rate Selection
TX POWER	Up to 28 dBm (dual chain)
TX POWER CONTROL	0 - 27 dB, in 1 dB steps. Automatic TPC with configurable EIRP limit

	80 MHz	40 MHz	20 MHz
TX POWER (dual RF)	MCS9: 21 dBm	MCS0: 28 dBm	MCS0: 29 dBm
	MCS0: -89 dBm	MCS9: 22 dBm	MCS9: 25 dBm
RX SENSITIVITY (Per=10%)	MCS9: -68 dBm	MCS0: -93 dBm	MCS0: -94 dBm
	Up to 672 Mbps	MCS9: -71 dBm	MCS9: -74 dBm
THROUGHPUT (RFC 2544)	Up to 324 Mbps	Up to 324 Mbps	Up to 134 Mbps
OTHER	Dynamic Channel Selection (DCS) based on interference detection, Dynamic Frequency Selection (DFS) based on radar signature, Automatic Transmit Power Control (ATPC) with EIRP limit support		

### MANAGEMENT

REMOTE	Telnet and SSH, Web GUI and SSL/TLS, TFTP, SNMPv3
SNMP	SNMP v1-v2c-v3, RFC-1213, RFC-1215, RFC-2790, RFC-2571, RFC-3412, RFC-3414, Private MIB
OTHER	Syslog, sFlow™ agent, SNTP and local time, Spectrum analyzer
Multi-Language Support	Web Interface available in English, French, Spanish and Chinese

### SYNCHRONIZATION

Pass-through SyncE and Precision Time Protocol (IEEE 1588v2) Ethernet Synchronization

## SECURITY

ENCRYPTION	AES 128
AUTHENTICATION	Internal MAC Address Control List, Radius based Authentication (with VLAN and QoS provisioning)

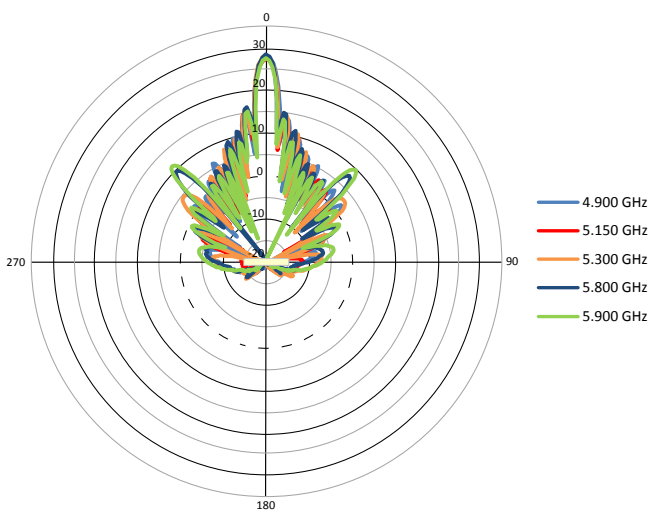
## ANTENNA

MP-10100L-BSU/SUA	Two N-type Connectors with built-in Surge Protection
MP-10150-SUL	Integrated 2x2 MIMO 28dBi Dual Polarized 2 feet Panel Antenna
MP-10150L-BS9	Integrated 2x2 MIMO 16dBi Dual Polarized 90 degree Sector Antenna
MP-10150L-BS1/SUR	Integrated 2x2 MIMO 22dBi Dual Polarized 1 foot Panel Antenna

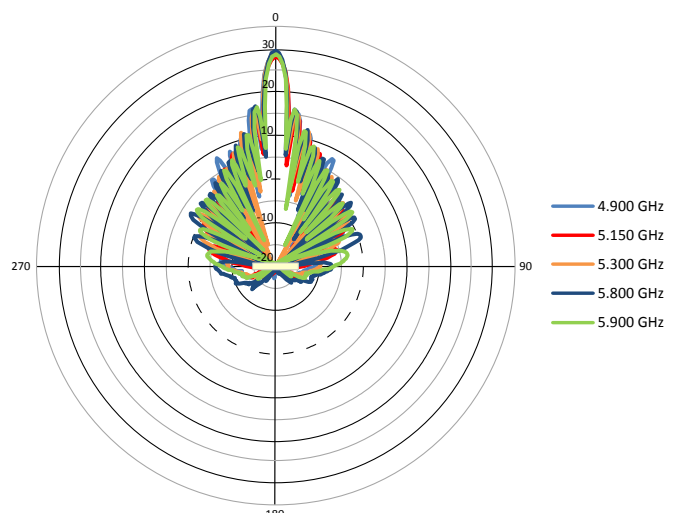
## ANTENNA PATTERNS (Sector Mode)

MP-10150-SUL

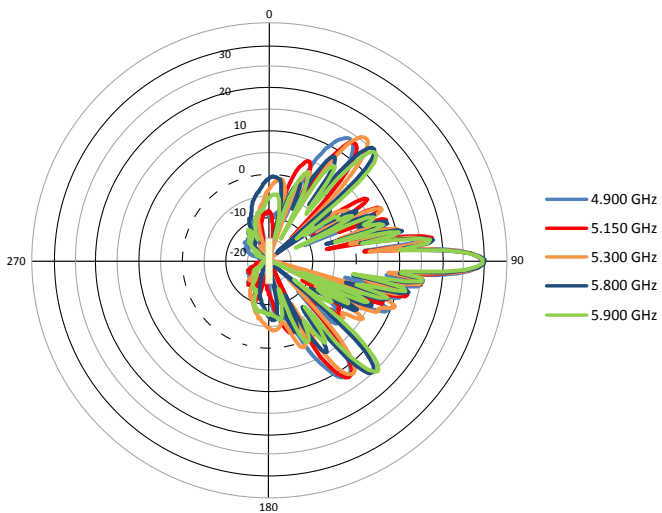
H-pol Azimuth



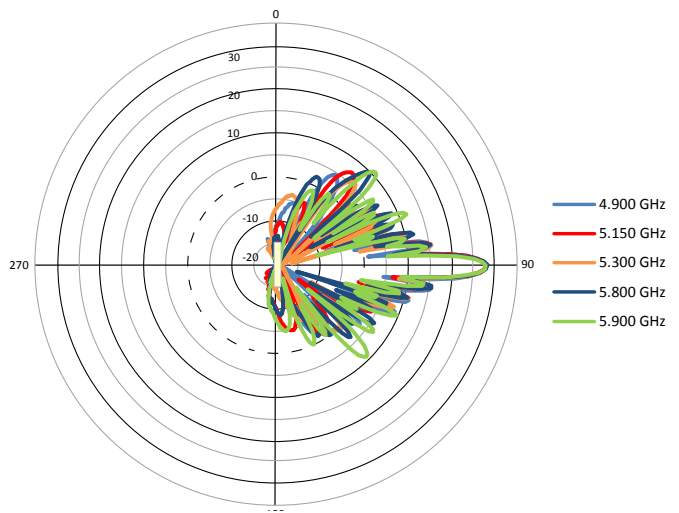
V-pol Azimuth



H-pol Elevation

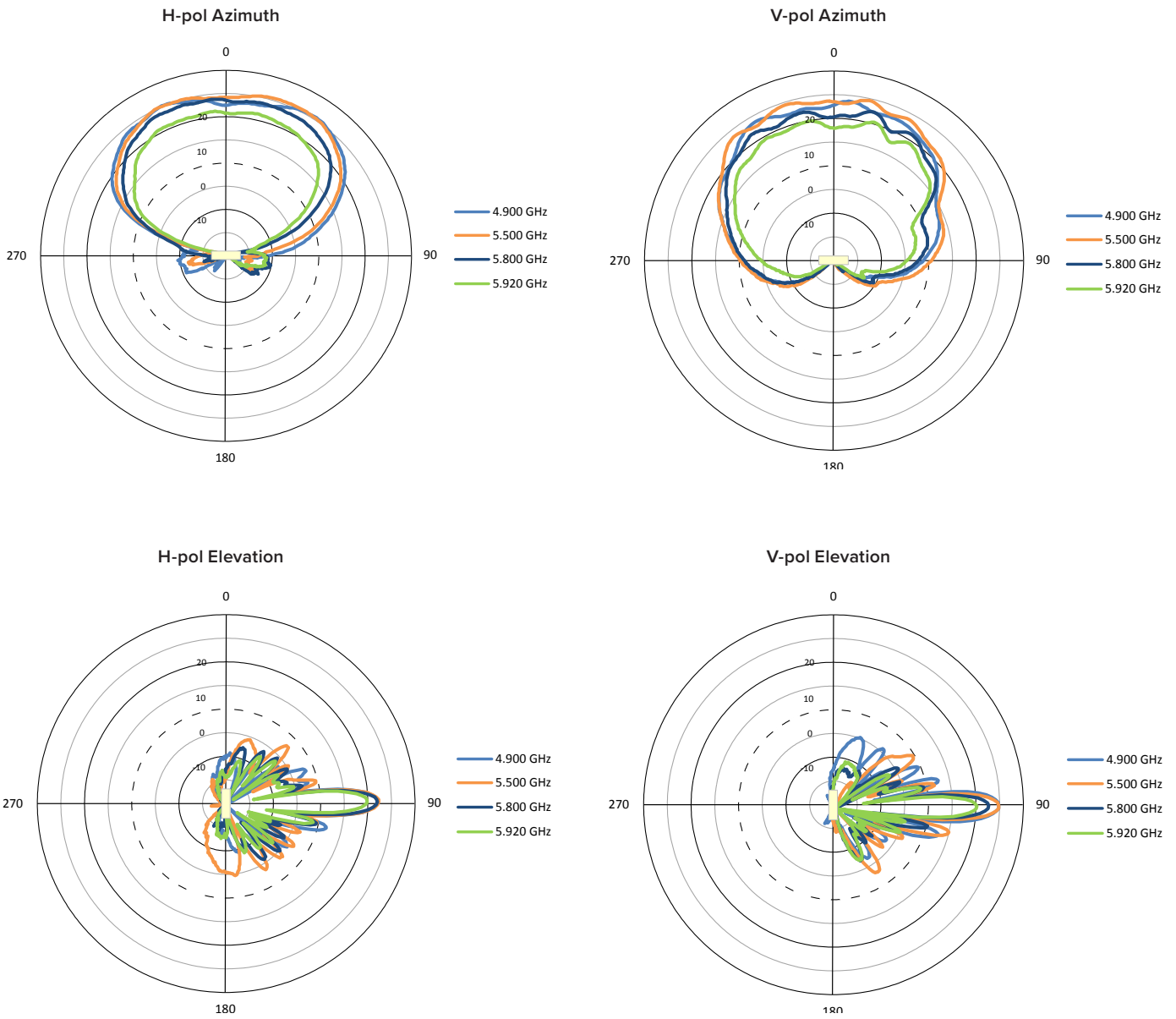


V-pol Elevation



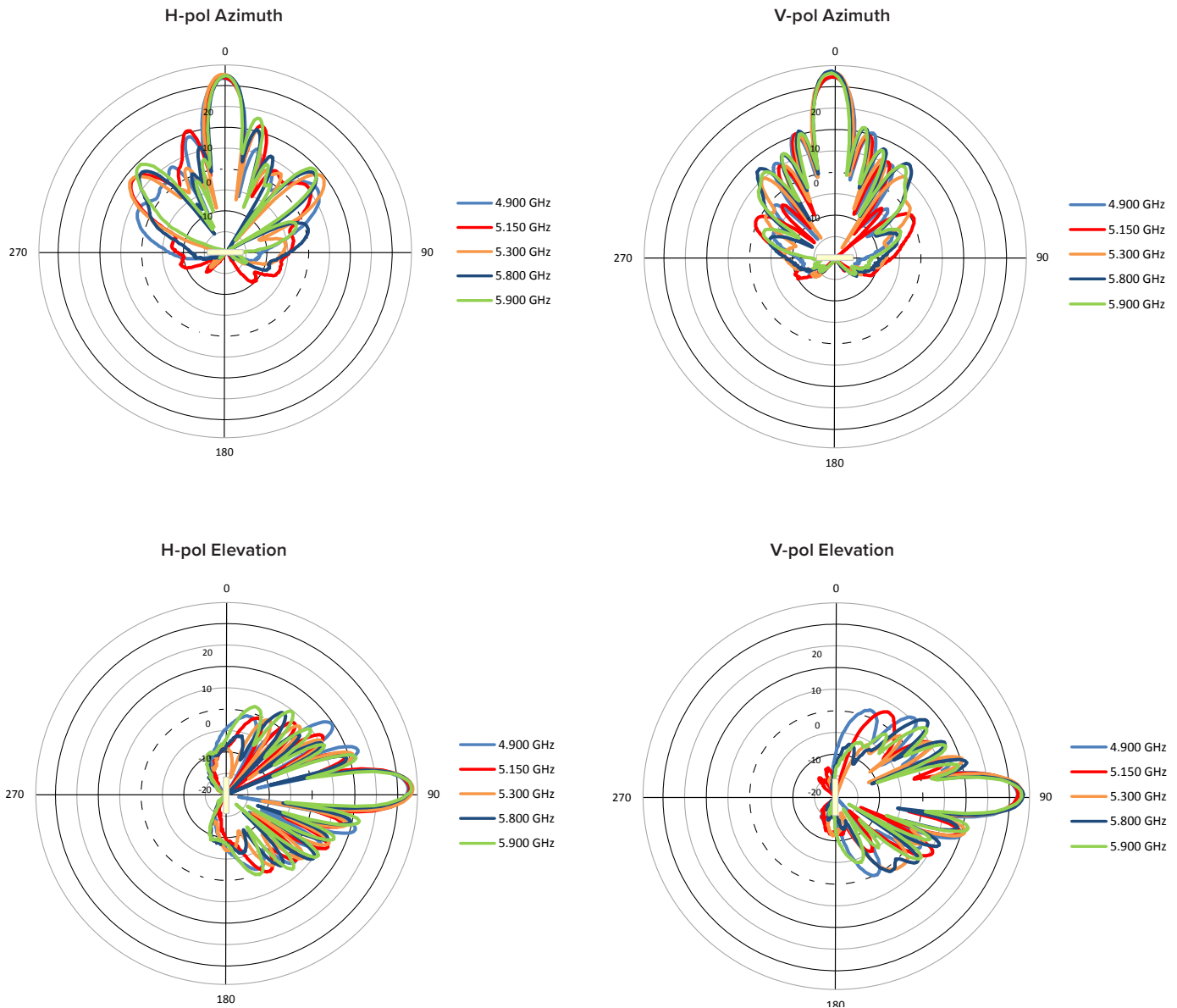
# ANTENNA PATTERNS (Sector Mode)

MP-10150L-BS9



## ANTENNA PATTERNS (Sector Mode)

MP-10150L-BS1/SUR



## QoS

Asymmetric Bandwidth Control	Asymmetric UL/DL committed and maximum information rate per service flow
Packet Classification Capabilities	802.1p priority, IPTOS, VLAN ID, IP addresses, ports, Ethernet addresses, IP protocol, and EtherType
Scheduling	Best Effort, Real Time Polling Services

## NETWORK

MODES	Bridging, Routing (RIP v2 and IP tunneling)
IP STACK	IPv4 and IPv6 simultaneously
GATEWAY FEATURES	DHCP Server & relay, NAT with Std ALGs, PPPoE end point with Proxy DNS
VLAN	802.1Q: Management VLAN. Transparent, Access, Trunk and Mixed mode. QinQ double tagging

**POWER****INPUT****OUTPUT**

36 to 57 VDC via Ethernet port1 (Power over Ethernet) 12 VDC via Access port Power should not be provided simultaneously on both ports	48 to 57 VDC – 25 Watt on Ethernet port2 (PoE – software controlled) 12 VDC on Access port
--	--

**POWER CONSUMPTION**

14 Watt typical, 17.5 Watt maximum

ENVIRONMENTAL SPECS	OPERATING TEMPERATURE	STORAGE TEMPERATURE	HUMIDITY - IP RATING	WIND LOADING
	-40° to 60°C (-40° to 140° Fahrenheit)	-50° to 70°C (-58° to 158° Fahrenheit)	100% relative humidity - IP67	200 km/h (125 Mph)
PHYSICAL SPECS	DIMENSIONS PACKAGED	DIMENSIONS NPACKAGED	WEIGHT (PACKAGED)	WEIGHT (UNPACKAGED)
MP-10100-BSU/SUA	14.56 x 13.0 x 7.87 in (370 x 331 x 200 mm)	9.84 x 8.66 x 2.83 in (250 x 220 x 72 mm)	9.92 lbs (4.5 kg)	4.20 lbs (1.9 kg)
MP-10150-BS9	18.46 x 7.05 x 21.57 in (469 x 179 x 548 mm)	14.57 x 14.57 x 4.21 in (370 x 370 x 107 mm)	13.67 lbs (6.2 kg)	7.27 lbs (3.3 kg)
MP-10150-BS1/SUR	14.56 x 13.0 x 7.87 in (370 x 331 x 200 mm)	12 x 12 x 3.40 in (305 x 305 x 85 mm)	10.91 lbs (4.95 kg)	5.30 lbs (2.4 kg)

**SAFETY STANDARDS**

UL 60950, CAN/CSA-C22.2 No. 60950, IEC 60950, EN 60950 (part -1 and -22)

**CERTIFICATIONS**

USA	FCC 90Y + 15E (UNII 15.247)
CANADA	IC RSS 102 + RSS 111 + RSS 247
EUROPE	RED EN 301 489-1 + EN 301-489-17 + EN 301 893 + EN 302 502
RAILWAY	EN 50155 + EN 50121 + EN 61373

**PACKAGE CONTENTS**

- One Tsunami® MP-10100L-BSU/SUA with two N-type surge protected connectors  
Or One Tsunami® MP-10150L-BS9/BS1/SUR with integrated dual polarized antenna
- One power injector and country specific power cord
- One Connector weatherproofing kit (Includes all recommended weatherproofing material)
- One Wall / Pole mounting kit
- One Antenna alignment (RJ11) dongle
- One Grounding kit
- One Quick Installation Guide

**MTBF & WARRANTY**

>250 000 hours, 2-year warranty, ServPak Extended Support available.

**ABOUT PROXIM WIRELESS:**

Proxim Wireless is a global leader in advanced wireless broadband and WiFi solutions that deliver high performance and high availability communications. Celebrating 40 years of pioneering wireless solutions, Proxim is recognized for unparalleled reliability, superior performance, and drive for innovation.

© 2022 Proxim Wireless Corporation. All rights reserved. Proxim is a registered trademark and the Proxim logo is a trademark of Proxim Wireless Corporation. All other trademarks mentioned herein are property of their respective owners. Specifications are subject to change without notice.