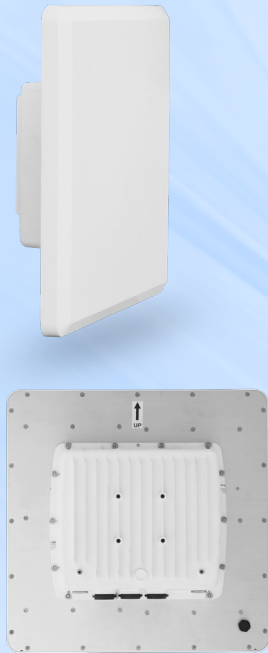


Multipoint 10250 BeamX Series



Product Snapshot

The Multipoint 10250 BeamX product family uses a beam steering antenna and a secondary, look-ahead scan radio to avoid interference and maximize the use of the available radio spectrum.

- Beam steering antenna for optimum performance
- 2×2 MIMO radio delivering up to 672Mbps throughput
- Advanced QoS for quad-play applications
- AES 128 bit encryption with 256 bit upgrade option
- 20, 40, and 80 MHz channels

Powered by WORP[®]

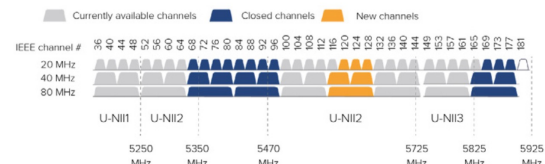
Proxim WORP enables the most efficient wireless broadband access possible in a packet-based network. Advanced QoS controls, committed interface rates, latency controls, IGMP snooping, and native multicast support allow granular service level management and the best

BeamX[™] Antenna

The BeamX[™] antenna utilizes a 17° beam that electronically steers itself to the remote client. The beam operates within a 60° sector. This improves the radio Signal to Noise Ratio (SNR), enables higher modulations, and improves throughput. BeamX also speeds up deployment by removing the antenna alignment phase. Roughly aim at the remote end, and the BeamX technology does the fine-tuning and SNR optimizing automatically.

Proxim SmartScan[™]

Performs background analysis of the entire RF spectrum and creates channel availability tables to allow an immediate switch to a free channel in case of weather radar detection or interference. SmartScan makes the DFS channel more efficient by removing the initial transmission delay. It also opens access to the 5.600–5.650 GHz sub-band and enables effective use of up to 355 MHz of DFS spectrum.



Rugged Reliability

IP67 rated metal enclosure to ensure years of reliable service in harsh environments, including high winds, high salt, and temperature extremes.

Specifications

PRODUCT MODELS

MP-10250-BSX-US	Tsunami® MP 10250 Base Station Unit, 867 Mbps, MIMO 2x2, 16 dBi BeamX antenna, Scan radio	PN: 901-00291
MP-10250-SRX-US	Tsunami MP 10250 Subscriber Unit, 867 Mbps, MIMO 2x2, BeamX antenna, SmartScan radio	PN: 901-00340

LICENSE UPGRADES

MP-102x0-BSx-AES256-UPG	Tsunami MP 10200 Base Station, AES 128 to AES 256 license upgrade	997-00050
MP-102x0-SUX-AES256-UPG	Tsunami MP 10200 Subscriber Unit, AES 128 to AES 256 license upgrade	997-00049

INTERFACES

WIRED ETHERNET	Two auto MDI-X RJ45 10/100/1000Mbps Ethernet (Port #1 with PoE in & Data, Port #2 with PoE out & Data)
WIRELESS PROTOCOL	WORP® (Wireless Outdoor Router Protocol)

RADIO & TX SPECS

MIMO	2x2:2 and 0x2:2 (scan radio)
MODULATION	OFDM with BPSK, QPSK, QAM16, QAM64, QAM256
FREQUENCY	4.900 – 5.850 GHz (Subject to Country Regulations)
CHANNEL SIZE	80 MHz, 40 MHz and 20 MHz
DATA RATE	MCS 0 to 9 with Dynamic Data Rate Selection
TX POWER	Up to 28 dBm (dual chain)
TX POWER CONTROL	0 - 27 dB, in 1 dB steps. Automatic TPC with configurable EIRP limit

	80 MHz	40 MHz	20 MHz	SCAN RADIO
TX POWER (dual RF)	MCS0: 28 dBm	MCS0: 28 dBm	MCS0: 29 dBm	N/A
	MCS9: 21 dBm	MCS9: 22 dBm	MCS8: 25 dBm	
RX SENSITIVITY (Per=10%)	MCS0: -89 dBm	MCS0: -93 dBm	MCS0: -94 dBm	N/A
	MCS9: -68 dBm	MCS9: -71 dBm	MCS8: -74 dBm	
THROUGHPUT	Up to 672 Mbps	Up to 324 Mbps	Up to 134 Mbps	N/A
OTHER	Dynamic Channel Selection (DCS) based on interference detection. Dynamic Frequency Selection (DFS) based on radar signature. Automatic Transmit Power Control (ATPC) with EIRP limit support.			

MANAGEMENT

REMOTE	Telnet and SSH, Web GUI and SSL, TFTP, SNMPv3
SNMP	SNMP v1-v2c-v3, RFC-1213, RFC-1215, RFC-2790, RFC-2571, RFC-3412, RFC-3414, Private MIB
OTHER	Syslog, sFlow™ agent, SNTP and local time, Spectrum analyzer
Multi-Language Support	Web Interface available in English, French, Spanish and Chinese

SYNCHRONIZATION

Pass-through SyncE and Precision Time Protocol (IEEE 1588v2) Ethernet Synchronization

SECURITY

ENCRYPTION	AES 128, upgradeable to AES 256
AUTHENTICATION	Internal MAC Address Control List, Radius based Authentication (with VLAN and QoS provisioning)

ANTENNA - Integrated 2x2 MIMO Beam Steering Antenna:

Beam Width	17° spanning over ± 30° sector
Receive Gain	16 dBi (11 dBi before 5.150 GHz)
Transmit Gain	20 dBi (11 dBi before 5.150 GHz)

QoS

Asymmetric Bandwidth Control	Asymmetric UL/DL committed and maximum information rate per service flow
Packet Classification Capabilities	802.1p priority, IPTOS, VLAN ID, IP addresses, ports, Ethernet addresses, IP protocol, and EtherType
Scheduling	Best Effort, Real Time Polling Services

NETWORK

MODES	Bridging, Routing (RIP v2 and IP tunneling)
IP STACK	IPv4 and IPv6 simultaneously
GATEWAY FEATURES	DHCP Server & relay, NAT with Std ALGs, PPPoE end point with Proxy DNS
VLAN	802.1Q: Management VLAN. Transparent, Access, Trunk and Mixed mode. QinQ double tagging

POWER

INPUT

OUTPUT

36 to 57 VDC via Ethernet port1 (Power over Ethernet) 12 VDC via Access port Power should not be provided simultaneously on both ports	48 to 57 VDC – 25 Watt on Ethernet port2 (PoE – software controlled) 12 VDC on Access port
--	--

POWER CONSUMPTION

30 Watt typical, 40 Watt maximum

ENVIRONMENTAL SPECS	OPERATING TEMPERATURE	STORAGE TEMPERATURE	HUMIDITY - IP RATING	WIND LOADING
	-40° to 60°C (-40° to 140° Fahrenheit)	-50° to 70°C (-58° to 158° Fahrenheit)	100% relative humidity - IP67	200 km/h (125 Mph)
PHYSICAL SPECS	DIMENSIONS PACKAGED	DIMENSIONS NPACKAGED	WEIGHT (PACKAGED)	WEIGHT (UNPACKAGED)
MP-10250-BSX/SRX	18.46 x 7.05 x 21.57 in (469 x 179 x 548 mm)	14 x 14 x 3.40 in (371 x 371 x 85 mm)	13.67 lbs (6.2 kg)	7.27 lbs (3.3 kg)

SAFETY STANDARDS

IEC 62368-1:2016 & 60950-22:2016
UL 62368-1 2nd edition & 60950-22 2nd edition
CAN/CSA C22.2 No 62368-1:14 & No 60950-22:17
EN 62368-1:2014 + A11:2017 & 60950-22:2017

CERTIFICATIONS

USA	FCC 90Y + 15E (UNII 15.247), Canada: IC RSS 102 + RSS 111 + RSS 247
EUROPE	RED EN 301 489-1 + EN 301-489-17 + EN 301 893 + EN 302 502

PACKAGE CONTENTS

- One Tsunami® MP-10250-BSX/SRX with integrated BeamX antenna and scan radio
- One power injector and country specific power cord
- One Connector weatherproofing kit (Includes all recommended weatherproofing material)
- One Wall / Pole mounting kit
- One Antenna alignment (RJ11) dongle
- One Grounding kit
- One Quick Installation Guide

MTBF & WARRANTY

MTBF over 250 000 hours & 2-year warranty with ServPak Extended Support available

ABOUT PROXIM WIRELESS:

Proxim Wireless is a global leader in advanced wireless broadband and WiFi solutions that deliver high performance and high availability communications. Celebrating 40 years of pioneering wireless solutions, Proxim is recognized for unparalleled reliability, superior performance, and drive for innovation.

© 2023 Proxim Wireless Corporation. All rights reserved. Proxim is a registered trademark and the Proxim logo is a trademark of Proxim Wireless Corporation. All other trademarks mentioned herein are property of their respective owners. Specifications are subject to change without notice.